



NAfME All-Northwest 2021

Wind Symphony □□□□□□□□

This group of approximately 100 members is designed to better serve schools with smaller student populations. For a complete list of schools eligible to audition for the 2021 NAfME All-Northwest Wind Symphony, view the state lists posted on our website, www.nafmenw.org.

This packet includes audition materials for the 2021 NAfME All-Northwest Wind Symphony. Students submitting their audition containing this material will ONLY be considered for the NAfME All-Northwest Wind Symphony. If you wish to be considered for the All-Northwest Band or Orchestra you must also submit the **Winds and Percussion** audition materials as a separate application and audition. You would then be considered for ALL instrumental groups that contain wind and percussion, except jazz which must also be submitted separately. A separate audition fee must be paid for each application type submitted.

This is not the application packet. These materials are being provided now for preparation purposes. The entire application packet will be available September 1 online at www.nafmenw.org, with the **deadline October 6th**.

**Important: Percussionists must audition on two of the three audition instruments:
Mallets, Snare Drum, Timpani.**

SPECIAL NOTE

Please note that for these auditions the following instruments must audition as specified; the opportunity to indicate an interest and proficiency on these instruments will appear online.

Piccolo (apply on flute)

Contra bassoon (apply on bassoon)

English horn (apply on oboe)

Eb soprano clarinet (apply on Bb)

**The conductors' score is in a separate online
packet for you to use.**

NafME All-Northwest Wind Symphony Audition

Flute

Exercise 1

Chromatic Scale

♩ = 60

Exercise 2

Etude Espressivo

♩ = 96

Exercise 3

Etude Technical

♩ = 120

Make sure you take the repeat on your recording

NafME All-Northwest Wind Symphony Audition

Oboe

Exercise 1 Chromatic Scale

♩ = 60



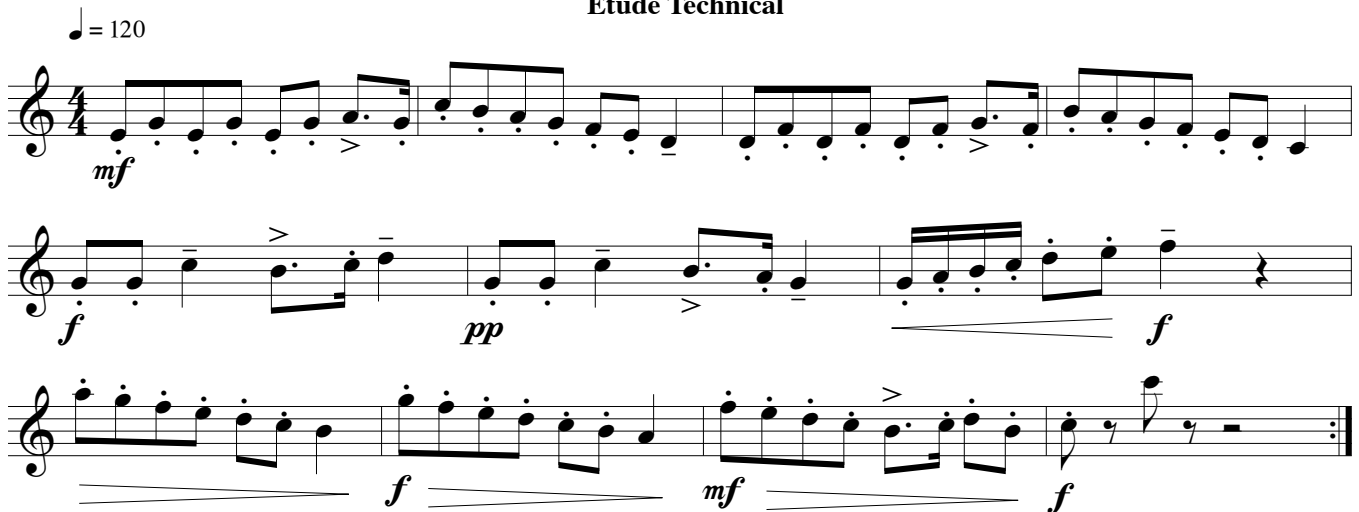
Exercise 2 Etude Espressivo

♩ = 96



Exercise 3 Etude Technical

♩ = 120



Make sure you take the repeat on your recording

NafME All-Northwest Wind Symphony Audition

Bassoon

Exercise 1 Chromatic Scale

♩ = 60

Musical notation for Exercise 1: Chromatic Scale. A single staff in bass clef, 4/4 time, with a key signature of two flats. The scale starts on G2 and ascends chromatically to G4, ending with a whole rest.

Exercise 2 Etude Expressivo

♩ = 96

Musical notation for Exercise 2: Etude Expressivo. Three staves in bass clef, 3/4 time, with a key signature of three flats. The piece features dynamic markings of *mp*, *mf*, and *f*, along with accents and slurs.

Exercise 3 Etude Technical

♩ = 120

Musical notation for Exercise 3: Etude Technical. Three staves in bass clef, 4/4 time, with a key signature of two flats. The piece features dynamic markings of *mf*, *f*, *pp*, and *f*, along with accents and slurs.

Make sure you take the repeat on your recording

NafME All-Northwest Wind Symphony Audition

B \flat Clarinet

Exercise 1 Chromatic Scale

$\text{♩} = 60$

Musical notation for Exercise 1: Chromatic Scale. A single staff in 4/4 time with a tempo of 60. The scale starts on G4 and moves chromatically up to G5, ending with a whole rest.

Exercise 2 Etude Espressivo

$\text{♩} = 96$

Musical notation for Exercise 2: Etude Espressivo. Three staves in 3/4 time with a tempo of 96. The piece features dynamic markings of *mp*, *mf*, and *f*, along with slurs and accents.

Exercise 3 Etude Technical

$\text{♩} = 120$

Musical notation for Exercise 3: Etude Technical. Three staves in 4/4 time with a tempo of 120. The piece features dynamic markings of *mf*, *f*, and *pp*, along with slurs and accents.

Make sure you take the repeat on your recording

NafME All-Northwest Wind Symphony Audition

Alto Clarinet

Exercise 1

Chromatic Scale

♩ = 60



Exercise 2

Etude Espressivo

♩ = 96



Exercise 3

Etude Technical

♩ = 120



Make sure you take the repeat on your recording

NafME All-Northwest Wind Symphony Audition

Bass Clarinet

Exercise 1

Chromatic Scale

♩ = 60



Exercise 2

Etude Espressivo

♩ = 96



Exercise 3

Etude Technical

♩ = 120



Make sure you take the repeat on your recording

NafME All-Northwest Wind Symphony Audition

Alto Sax

Exercise 1

Chromatic Scale

♩ = 60

Exercise 2

Etude Expressivo

♩ = 96

Exercise 3

Etude Technical

♩ = 120

Make sure you take the repeat on your recording

NafME All-Northwest Wind Symphony Audition

Tenor Sax

Exercise 1 Chromatic Scale

♩ = 60

Exercise 2 Etude Espressivo

♩ = 96

Exercise 3 Etude Technical

♩ = 120

Make sure you take the repeat on your recording

NafME All-Northwest Wind Symphony Audition

Baritone Sax

Exercise 1 Chromatic Scale

♩ = 60



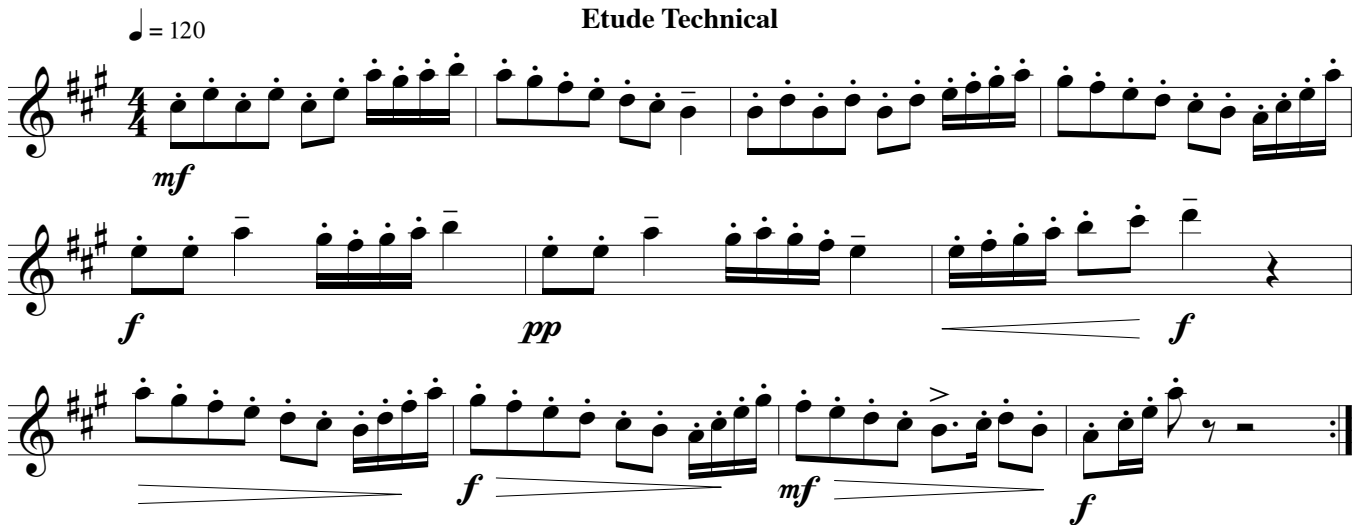
Exercise 2 Etude Expressivo

♩ = 96



Exercise 3 Etude Technical

♩ = 120



Make sure you take the repeat on your recording

NafME All-Northwest Wind Symphony Audition

Trumpet
Euphonium TC

Exercise 1 Chromatic Scale

♩ = 60

Exercise 2 Etude Espressivo

♩ = 96

Exercise 3 Etude Technical

♩ = 120

Make sure you take the repeat on your recording

NafME All-Northwest Wind Symphony Audition

F Horn

Exercise 1 Chromatic Scale

♩ = 60



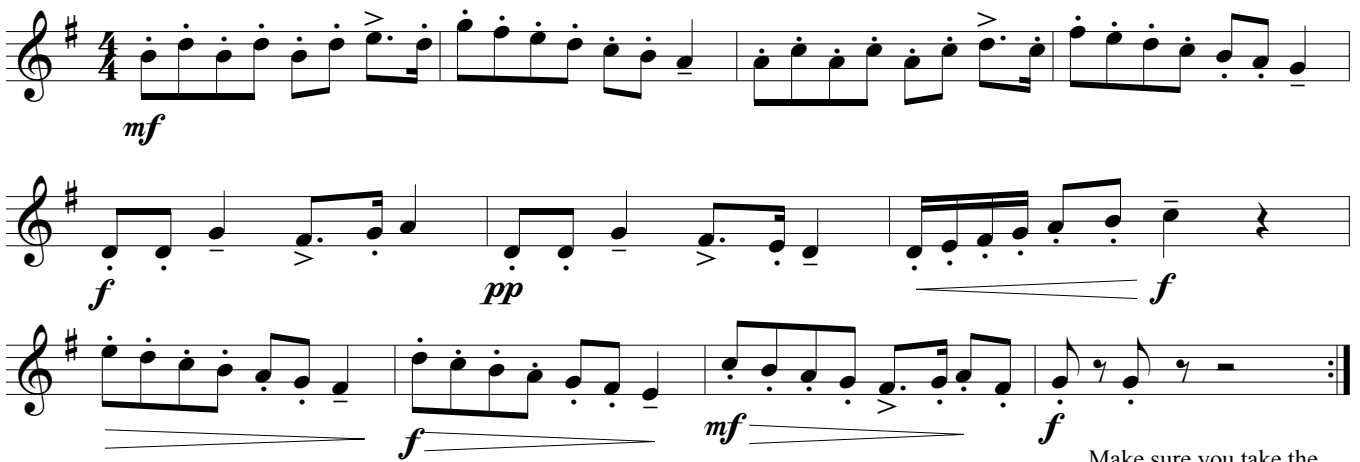
Exercise 2 Etude Espressivo

♩ = 96



Exercise 3 Etude Technical

♩ = 120



Make sure you take the repeat on your recording

NafME All-Northwest Wind Symphony Audition

Trombone

Exercise 1

Chromatic Scale

♩ = 60

Musical notation for Exercise 1: Chromatic Scale. A single staff in bass clef, 4/4 time, with a key signature of two flats. The scale starts on C2 and ascends chromatically to C3, ending with a whole rest.

Exercise 2

Etude Expressivo

♩ = 96

Musical notation for Exercise 2: Etude Expressivo. Three staves in bass clef, 3/4 time, with a key signature of two flats. The piece features dynamic markings of *mp*, *mf*, and *f*, along with slurs and accents.

Exercise 3

Etude Technical

♩ = 120

Musical notation for Exercise 3: Etude Technical. Three staves in bass clef, 4/4 time, with a key signature of two flats. The piece features dynamic markings of *mf*, *f*, and *pp*, along with slurs and accents.

Make sure you take the repeat on your recording

NafME All-Northwest Wind Symphony Audition

Euphonium

Exercise 1 Chromatic Scale

♩ = 60

Exercise 2 Etude Espressivo

♩ = 96

Exercise 3 Etude Technical

♩ = 120

Make sure you take the repeat on your recording

NafME All-Northwest Wind Symphony Audition

Tuba

Exercise 1 Chromatic Scale

♩ = 60



Exercise 2 Etude Expressivo

♩ = 96



Exercise 3 Etude Technical

♩ = 120



*Make sure you take the repeat on your recording

NafME All-Northwest Wind Symphony Audition

Snare Drum

Exercise 1 Chromatic Scale

$\text{♩} = 60$

RLRRLRLLRLRRLLR LRLLRRLRRLRLLRRL RLR LRL RLR R

Exercise 2 Etude Espressivo

$\text{♩} = 96$

mp *mf* *f*

Exercise 3 Etude Technical

$\text{♩} = 120$

mf *f* *pp* *f* *f* *f*

Make sure you take the repeat on your recording

NafME All-Northwest Wind Symphony Audition

Percussionists must audition on 2 of the 3 instruments (snare drum/mallets/timpani)

Mallets

Exercise 1

Chromatic Scale

♩ = 60

Musical notation for Exercise 1: Chromatic Scale. A single staff in 4/4 time with a key signature of two flats (Bb, Eb). The tempo is marked as quarter note = 60. The piece consists of a single melodic line with a chromatic scale from G2 to G3, followed by a whole rest.

Exercise 2

Etude Espressivo

♩ = 96

Musical notation for Exercise 2: Etude Espressivo. Three staves in 3/4 time with a key signature of three flats (Bbb, Ebb, Ab). The tempo is marked as quarter note = 96. The piece features dynamic markings of *mp*, *mf*, and *f*, along with accents and slurs.

Exercise 3

Etude Technical

♩ = 120

Musical notation for Exercise 3: Etude Technical. Three staves in 4/4 time with a key signature of two flats (Bb, Eb). The tempo is marked as quarter note = 120. The piece features dynamic markings of *mf*, *f*, and *pp*, along with accents and slurs.

Make sure you take the repeat on your recording

NafME All-Northwest Wind Symphony Audition

Percussionists must audition on 2 of the 3 instruments (snare drum/mallets/timpani)

Timpani

Exercise 1

Chromatic Scale

♩ = 60



Exercise 2

Etude Espressivo

♩ = 96



Exercise 3

Etude Technical

♩ = 120

