



NAfME All-Northwest 2021 Wind Symphony Audition Materials

This group of approximately 100 members is designed to better serve schools with smaller student populations. For a complete list of schools eligible to audition for the 2021 NAfME All-Northwest Wind Symphony, view the state lists posted on our website, www.nafmenw.org.

This packet includes audition materials for the 2021 NAfME All-Northwest Wind Symphony. Students submitting their audition containing this material will ONLY be considered for the NAfME All-Northwest Wind Symphony. If you wish to be considered for the All-Northwest Band or Orchestra you must also submit the **Winds and Percussion** audition materials as a separate application and audition. You would then be considered for ALL instrumental groups that contain wind and percussion, except jazz which must also be submitted separately. A separate audition fee must be paid for each application type submitted.

All audition submissions must be VIDEO, recorded direct to laptop or desktop computer. Application deadline is Saturday, December 5th.

**Important: Percussionists must audition on two of the three audition instruments:
Mallets, Snare Drum, Timpani.**

Percussion Applicants: Due to remote learning required in some areas we understand that some percussionists may not have access to the full array of required instruments. If you are interested in applying but cannot access one or more instrument types, you are welcome to audition on those that you can and leave other tracks blank.

SPECIAL NOTE

Please note that for these auditions the following instruments must audition as specified; the opportunity to indicate an interest and proficiency on these instruments will appear online.

Piccolo (apply on flute)

English horn (apply on oboe)

Contra bassoon (apply on bassoon)

Eb soprano clarinet (apply on Bb)

The conductors' score is in a separate online packet for you to use.

NafME All-Northwest Wind Symphony Audition

Flute

Exercise 1

Chromatic Scale

♩ = 60

Musical notation for Exercise 1: Chromatic Scale. A single staff in 4/4 time, key of B-flat major. The scale starts on G4 and ascends chromatically to G5. The tempo is marked as quarter note = 60.

Exercise 2

Etude Espressivo

♩ = 96

Musical notation for Exercise 2: Etude Espressivo. Three staves in 3/4 time, key of B-flat major. The piece features expressive phrasing with dynamics ranging from *mp* to *f*. It includes slurs, accents, and hairpins.

Exercise 3

Etude Technical

♩ = 120

Musical notation for Exercise 3: Etude Technical. Three staves in 4/4 time, key of B-flat major. The piece is a technical exercise featuring sixteenth-note patterns with dynamics ranging from *mf* to *f*. It includes slurs and hairpins.

Make sure you take the repeat on your recording

NafME All-Northwest Wind Symphony Audition

Oboe

Exercise 1 Chromatic Scale

♩ = 60



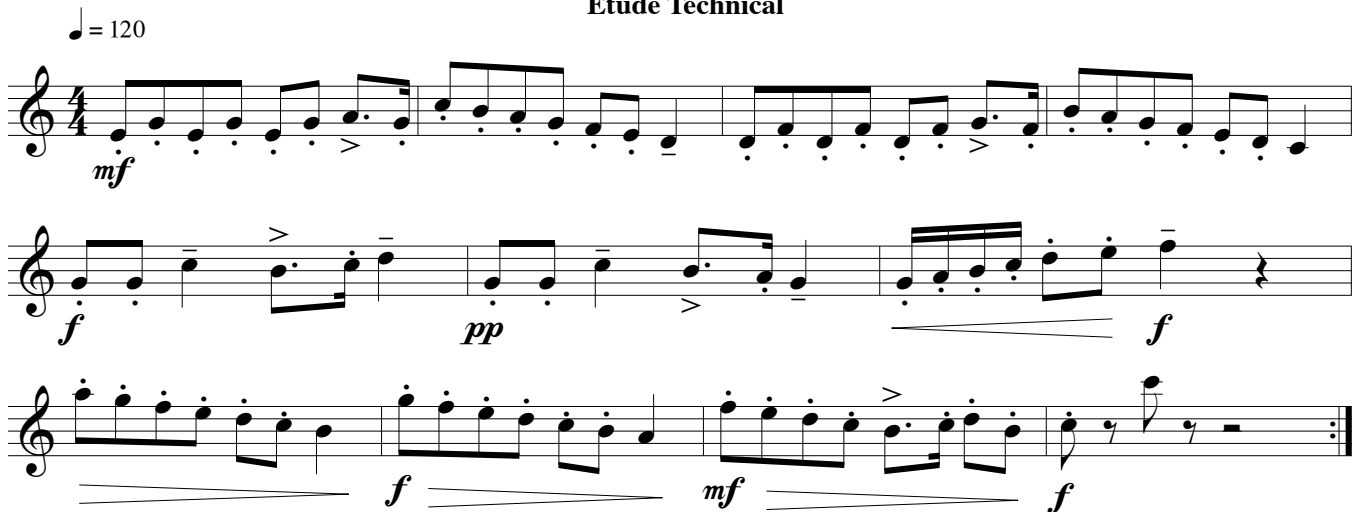
Exercise 2 Etude Espressivo

♩ = 96



Exercise 3 Etude Technical

♩ = 120



Make sure you take the repeat on your recording

NafME All-Northwest Wind Symphony Audition

Bassoon

Exercise 1 Chromatic Scale

♩ = 60

Musical notation for Exercise 1: Chromatic Scale. A single staff in bass clef, 4/4 time, with a key signature of two flats. The scale starts on G2 and ascends chromatically to G4, ending with a whole rest.

Exercise 2 Etude Expressivo

♩ = 96

Musical notation for Exercise 2: Etude Expressivo. Three staves in bass clef, 3/4 time, with a key signature of three flats. The piece features dynamic markings of *mp*, *mf*, and *f*, along with accents and slurs.

Exercise 3 Etude Technical

♩ = 120

Musical notation for Exercise 3: Etude Technical. Three staves in bass clef, 4/4 time, with a key signature of two flats. The piece features dynamic markings of *mf*, *f*, *pp*, and *f*, along with accents and slurs.

Make sure you take the repeat on your recording

NafME All-Northwest Wind Symphony Audition

B \flat Clarinet

Exercise 1 Chromatic Scale

$\text{♩} = 60$



Exercise 2 Etude Espressivo

$\text{♩} = 96$



Exercise 3 Etude Technical

$\text{♩} = 120$



Make sure you take the repeat on your recording

NafME All-Northwest Wind Symphony Audition

Alto Clarinet

Exercise 1

Chromatic Scale

♩ = 60



Exercise 2

Etude Espressivo

♩ = 96



Exercise 3

Etude Technical

♩ = 120



Make sure you take the repeat on your recording

NafME All-Northwest Wind Symphony Audition

Bass Clarinet

Exercise 1

Chromatic Scale

♩ = 60

Exercise 2

Etude Espressivo

♩ = 96

Exercise 3

Etude Technical

♩ = 120

Make sure you take the repeat on your recording

NafME All-Northwest Wind Symphony Audition

Alto Sax

Exercise 1

Chromatic Scale

♩ = 60

Exercise 2

Etude Expressivo

♩ = 96

Exercise 3

Etude Technical

♩ = 120

Make sure you take the repeat on your recording

NafME All-Northwest Wind Symphony Audition

Tenor Sax

Exercise 1 Chromatic Scale

♩ = 60



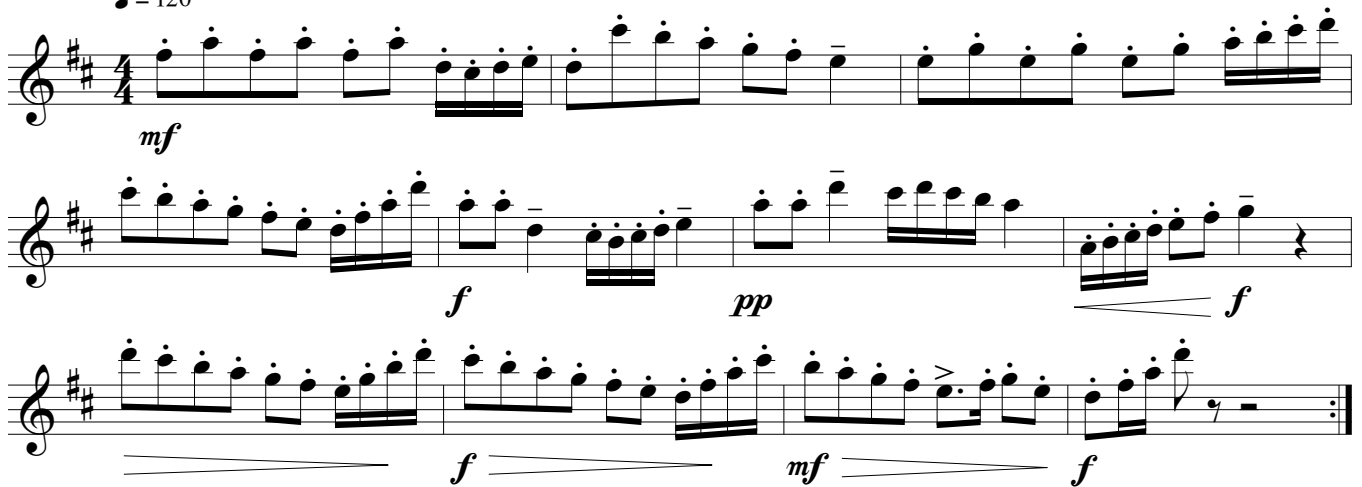
Exercise 2 Etude Espressivo

♩ = 96



Exercise 3 Etude Technical

♩ = 120



Make sure you take the repeat on your recording

NafME All-Northwest Wind Symphony Audition

Baritone Sax

Exercise 1 Chromatic Scale

♩ = 60



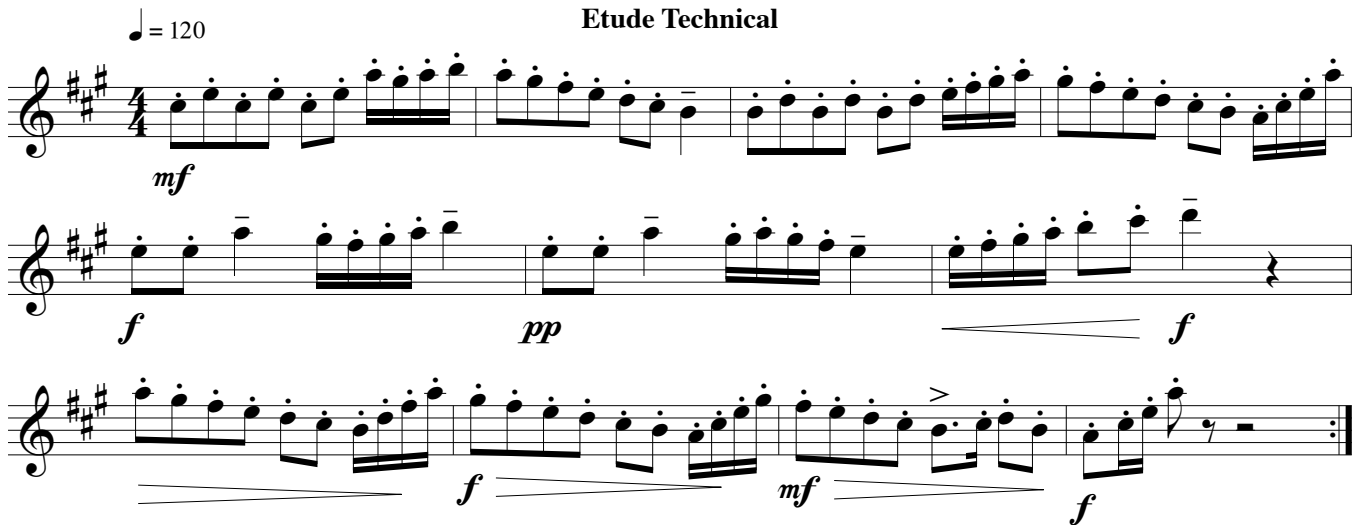
Exercise 2 Etude Expressivo

♩ = 96



Exercise 3 Etude Technical

♩ = 120



Make sure you take the repeat on your recording

NafME All-Northwest Wind Symphony Audition

Trumpet
Euphonium TC

Exercise 1 Chromatic Scale

♩ = 60

Exercise 2 Etude Espressivo

♩ = 96

Exercise 3 Etude Technical

♩ = 120

Make sure you take the repeat on your recording

NafME All-Northwest Wind Symphony Audition

F Horn

Exercise 1 Chromatic Scale

♩ = 60



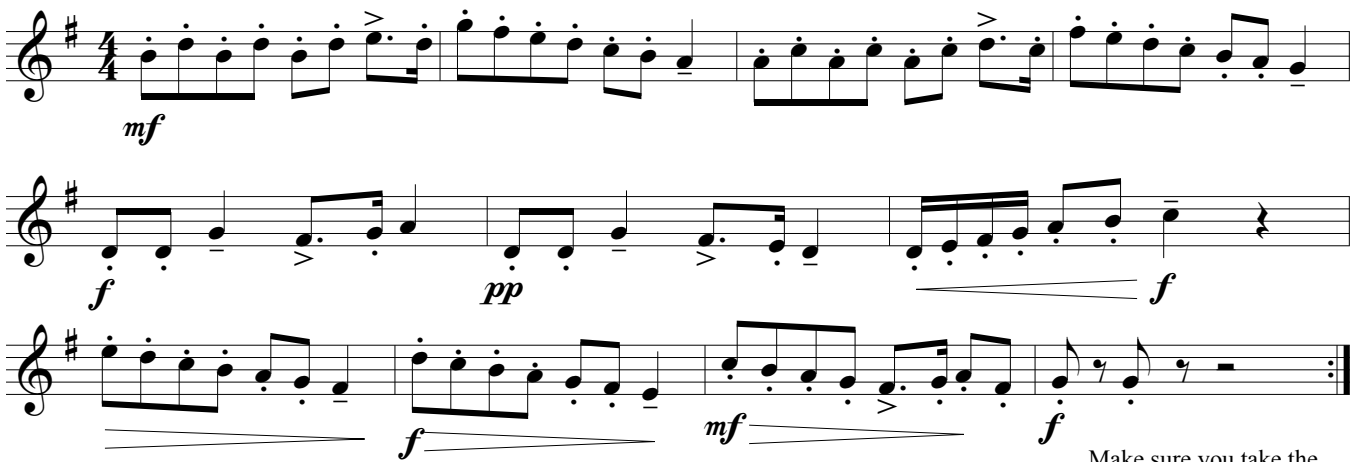
Exercise 2 Etude Espressivo

♩ = 96



Exercise 3 Etude Technical

♩ = 120



Make sure you take the repeat on your recording

NafME All-Northwest Wind Symphony Audition

Trombone

Exercise 1

Chromatic Scale

♩ = 60

Musical notation for Exercise 1: Chromatic Scale. A single staff in bass clef, 4/4 time, with a key signature of two flats. The piece consists of a single line of chromatic eighth notes starting on G2 and ascending to G3, followed by a whole rest.

Exercise 2

Etude Expressivo

♩ = 96

Musical notation for Exercise 2: Etude Expressivo. Three staves in bass clef, 3/4 time, with a key signature of three flats. The piece features expressive phrasing with dynamics ranging from *mp* to *f*. The notation includes slurs, accents, and dynamic markings.

Exercise 3

Etude Technical

♩ = 120

Musical notation for Exercise 3: Etude Technical. Three staves in bass clef, 4/4 time, with a key signature of two flats. The piece is a technical exercise with dynamics ranging from *mf* to *f*. The notation includes slurs, accents, and dynamic markings.

Make sure you take the repeat on your recording

NafME All-Northwest Wind Symphony Audition

Euphonium

Exercise 1 Chromatic Scale

♩ = 60

Exercise 2 Etude Espressivo

♩ = 96

Exercise 3 Etude Technical

♩ = 120

Make sure you take the repeat on your recording

NafME All-Northwest Wind Symphony Audition

Tuba

Exercise 1 Chromatic Scale

♩ = 60



Exercise 2 Etude Expressivo

♩ = 96



Exercise 3 Etude Technical

♩ = 120



*Make sure you take the repeat on your recording

NafME All-Northwest Wind Symphony Audition

Snare Drum

Exercise 1

Chromatic Scale

$\text{♩} = 60$

RLRRLRLLRLRRLLR LRLRLRLRRLRLLRRL RLR LRL RLR R

Exercise 2

Etude Expressivo

$\text{♩} = 96$

mp *mf* *f*

Exercise 3

Etude Technical

$\text{♩} = 120$

mf *f* *pp* *f* *f* *mf* *f*

Make sure you take the repeat on your recording

NafME All-Northwest Wind Symphony Audition

Percussionists must audition on 2 of the 3 instruments (snare drum/mallets/timpani)

Mallets

Exercise 1

Chromatic Scale

♩ = 60

Exercise 2

Etude Espressivo

♩ = 96

Exercise 3

Etude Technical

♩ = 120

Make sure you take the repeat on your recording

NafME All-Northwest Wind Symphony Audition

Percussionists must audition on 2 of the 3 instruments (snare drum/mallets/timpani)

Timpani

Exercise 1

Chromatic Scale

♩ = 60



Exercise 2

Etude Espressivo

♩ = 96

Exercise 3

Etude Technical

♩ = 120