



# NAfME All-Northwest 2023 Wind Symphony Audition Materials

This group of approximately 100 members is designed to better serve schools with smaller

student populations. For a complete list of schools eligible to audition for the 2023 NAfME All-Northwest Wind Symphony, view the state lists posted separately on our website.

This packet includes audition materials for the 2023 NAfME All-Northwest Wind Symphony. Students submitting their audition containing this material will ONLY be considered for the NAfME All-Northwest Wind Symphony. If you wish to be considered for the All-Northwest Band or Orchestra you must also submit the **Winds and Percussion** audition materials as a separate application and audition. You would then be considered for ALL instrumental groups that contain wind and percussion, except jazz which must also be submitted separately.

**Deadline is 11:59 PM October 5th.**

**Important: Percussionists must audition on two of the three audition instruments:  
Mallets, Snare Drum, Timpani.**

## SPECIAL NOTE

Please note that for these auditions the following instruments must audition as specified; the opportunity to indicate an interest and proficiency on these instruments will appear online.

**Piccolo** (apply on flute)

**English horn** (apply on oboe)

**Contra bassoon** (apply on bassoon)

**Eb soprano clarinet** (apply on Bb)

**The conductors' score is in a separate online  
packet for you to use.**

# NafME All-Northwest Wind Symphony Audition

Flute

## Exercise 1

### Chromatic Scale

♩ = 60

## Exercise 2

### Etude Espressivo

♩ = 96

## Exercise 3

### Etude Technical

♩ = 120

Make sure you take the repeat on your recording

# NafME All-Northwest Wind Symphony Audition

Oboe

## Exercise 1 Chromatic Scale

♩ = 60



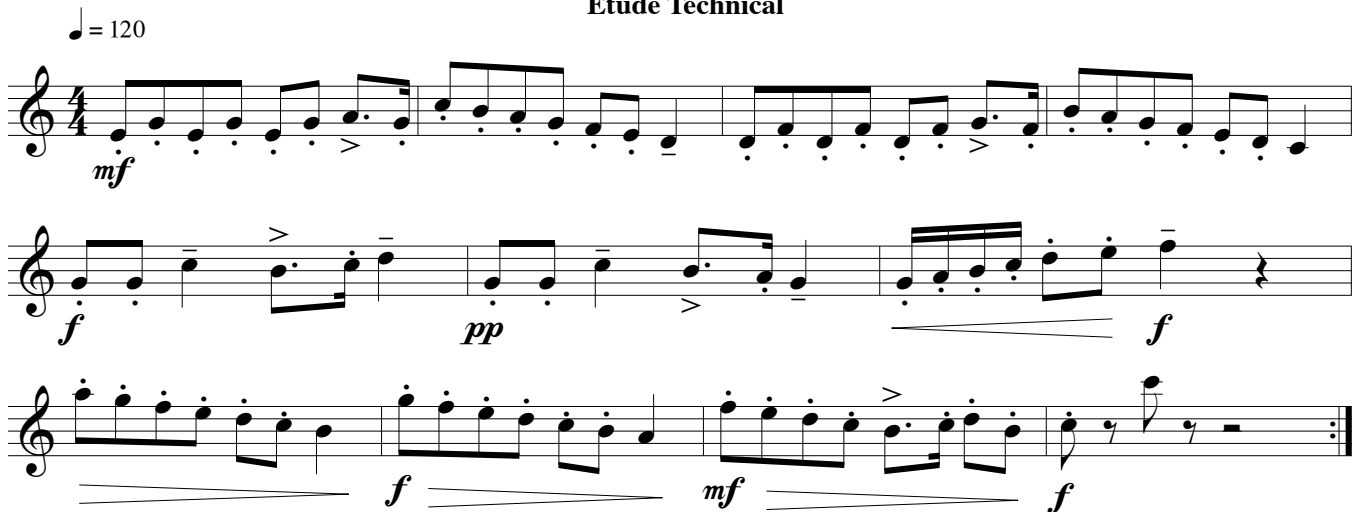
## Exercise 2 Etude Espressivo

♩ = 96



## Exercise 3 Etude Technical

♩ = 120



Make sure you take the repeat on your recording

# NafME All-Northwest Wind Symphony Audition

Bassoon

## Exercise 1 Chromatic Scale

♩ = 60



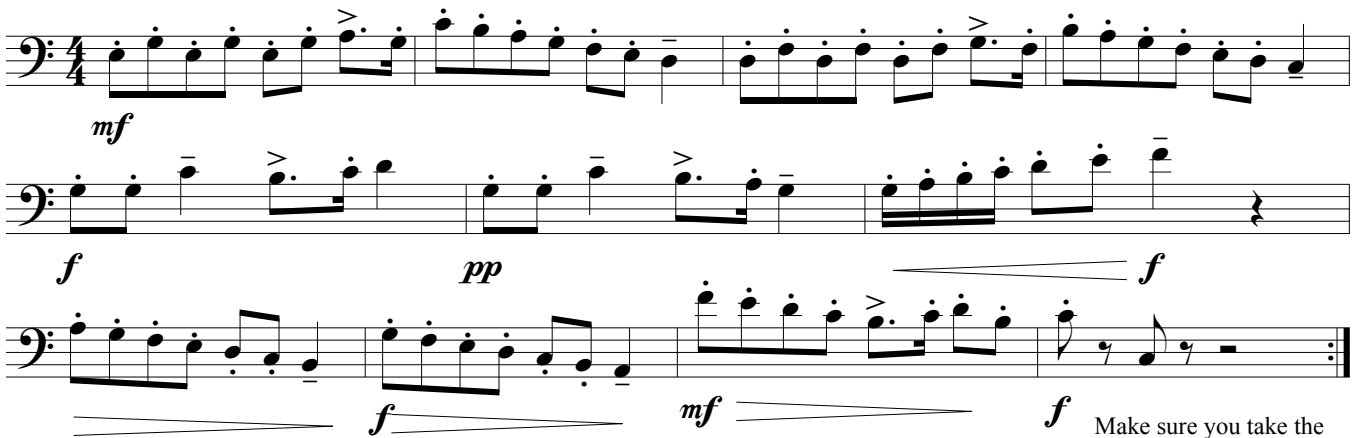
## Exercise 2 Etude Expressivo

♩ = 96



## Exercise 3 Etude Technical

♩ = 120



Make sure you take the repeat on your recording

# NafME All-Northwest Wind Symphony Audition

B $\flat$  Clarinet

## Exercise 1 Chromatic Scale

$\text{♩} = 60$



## Exercise 2 Etude Espressivo

$\text{♩} = 96$



## Exercise 3 Etude Technical

$\text{♩} = 120$



Make sure you take the repeat on your recording

# NafME All-Northwest Wind Symphony Audition

Alto Clarinet

## Exercise 1

### Chromatic Scale

♩ = 60



## Exercise 2

### Etude Espressivo

♩ = 96



## Exercise 3

### Etude Technical

♩ = 120



Make sure you take the repeat on your recording

# NafME All-Northwest Wind Symphony Audition

Bass Clarinet

## Exercise 1

### Chromatic Scale

♩ = 60

## Exercise 2

### Etude Espressivo

♩ = 96

## Exercise 3

### Etude Technical

♩ = 120

Make sure you take the repeat on your recording

# NafME All-Northwest Wind Symphony Audition

Alto Sax

## Exercise 1

### Chromatic Scale

♩ = 60



# NafME All-Northwest Wind Symphony Audition

Tenor Sax

## Exercise 1 Chromatic Scale

♩ = 60



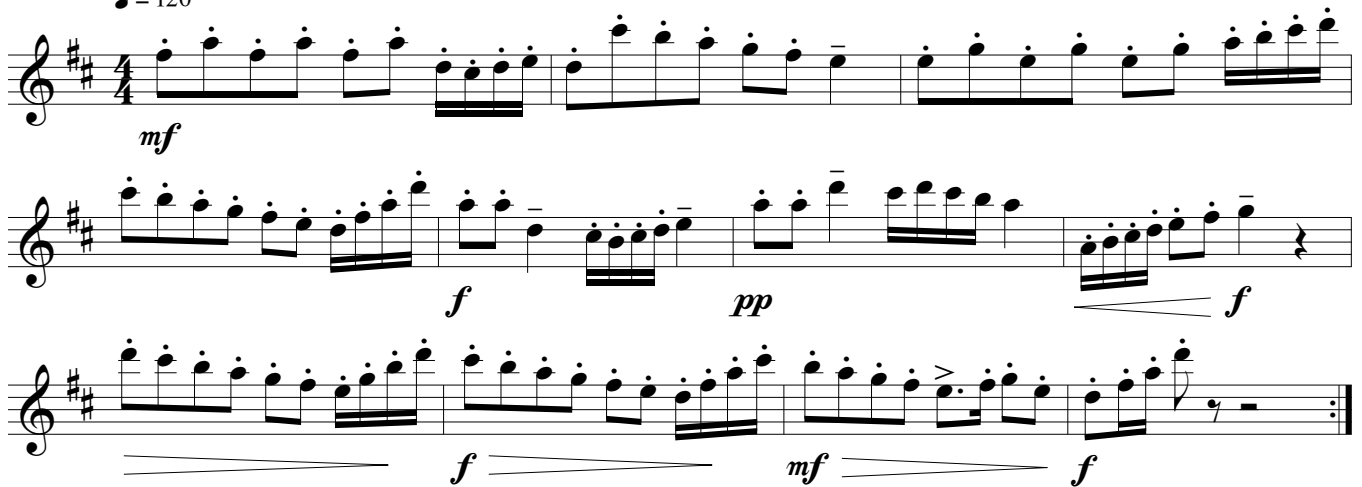
## Exercise 2 Etude Espressivo

♩ = 96



## Exercise 3 Etude Technical

♩ = 120



Make sure you take the repeat on your recording

# NafME All-Northwest Wind Symphony Audition

Baritone Sax

## Exercise 1 Chromatic Scale

♩ = 60

Musical notation for Exercise 1: Chromatic Scale. A single staff in treble clef with a key signature of one sharp (F#) and a 4/4 time signature. The piece consists of a single line of chromatic eighth notes ascending from C4 to C5, followed by a whole rest.

## Exercise 2 Etude Expressivo

♩ = 96

Musical notation for Exercise 2: Etude Expressivo. Three staves in treble clef with a key signature of one flat (Bb) and a 3/4 time signature. The piece features various dynamics including *mp*, *mf*, and *f*, along with accents and slurs.

## Exercise 3 Etude Technical

♩ = 120

Musical notation for Exercise 3: Etude Technical. Three staves in treble clef with a key signature of three sharps (F#, C#, G#) and a 4/4 time signature. The piece features rapid sixteenth-note passages with dynamics including *mf*, *f*, and *pp*.

Make sure you take the repeat on your recording

# NafME All-Northwest Wind Symphony Audition

Trumpet  
Euphonium TC

## Exercise 1 Chromatic Scale

♩ = 60



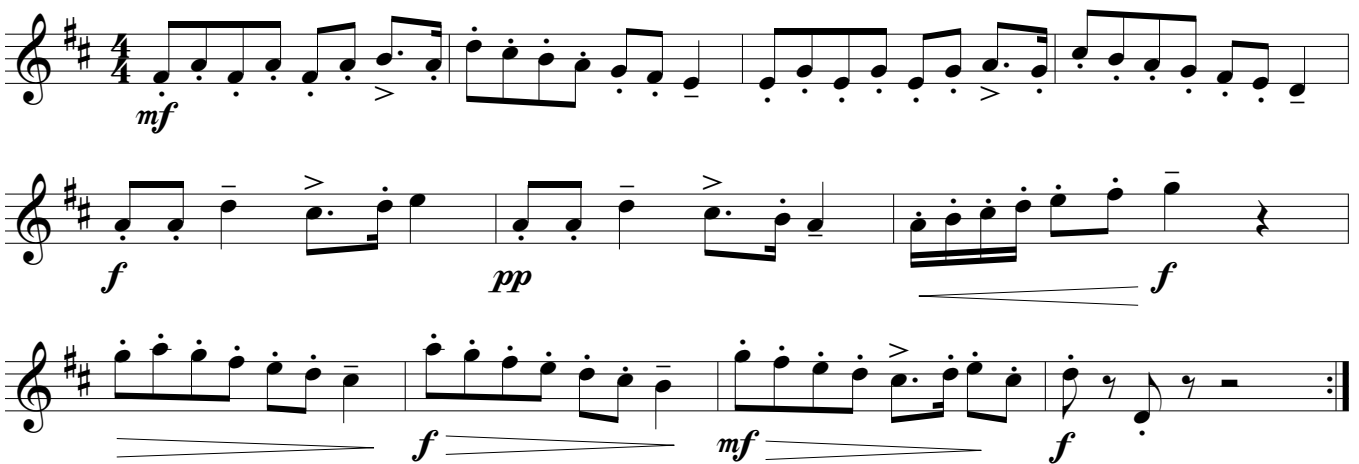
## Exercise 2 Etude Espressivo

♩ = 96



## Exercise 3 Etude Technical

♩ = 120



Make sure you take the repeat on your recording

# NafME All-Northwest Wind Symphony Audition

F Horn

## Exercise 1 Chromatic Scale

♩ = 60



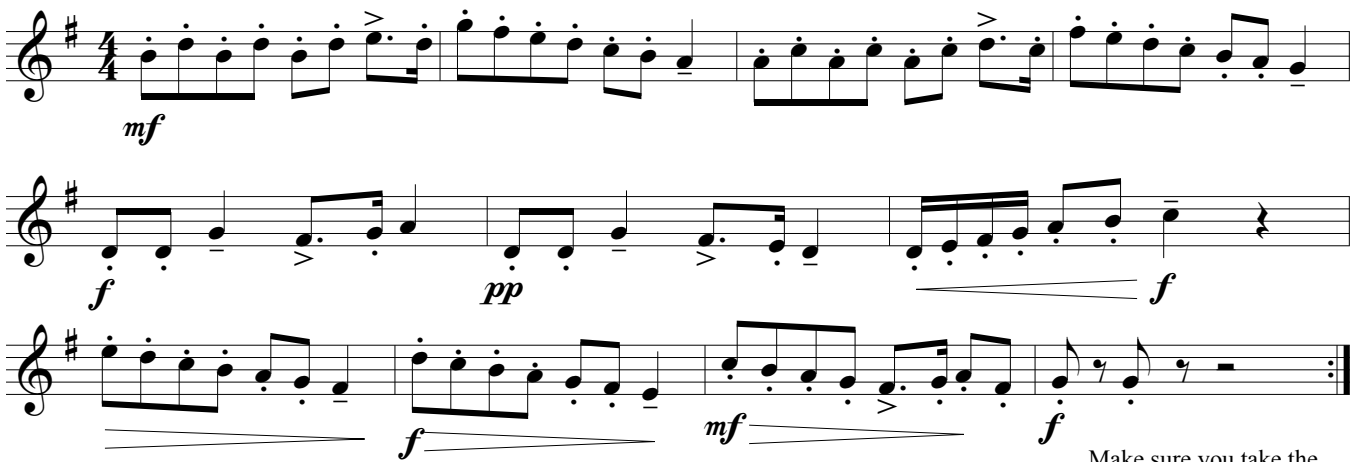
## Exercise 2 Etude Espressivo

♩ = 96



## Exercise 3 Etude Technical

♩ = 120



Make sure you take the repeat on your recording

# NafME All-Northwest Wind Symphony Audition

Trombone

## Exercise 1

### Chromatic Scale

♩ = 60



## Exercise 2

### Etude Expressivo

♩ = 96



*mp* *mf* *f*

## Exercise 3

### Etude Technical

♩ = 120



*mf* *f* *pp* *f* *f* *f*

Make sure you take the repeat on your recording

# NafME All-Northwest Wind Symphony Audition

Euphonium

## Exercise 1 Chromatic Scale

♩ = 60

Musical notation for Exercise 1: Chromatic Scale. A single staff in bass clef, 4/4 time, with a key signature of two flats. The scale starts on C2 and ascends chromatically to C3, ending with a whole rest.

## Exercise 2 Etude Espressivo

♩ = 96

Musical notation for Exercise 2: Etude Espressivo. Three staves in bass clef, 3/4 time, with a key signature of two flats. The piece features dynamic markings of *mp*, *mf*, and *f*, along with accents and slurs.

## Exercise 3 Etude Technical

♩ = 120

Musical notation for Exercise 3: Etude Technical. Three staves in bass clef, 4/4 time, with a key signature of two flats. The piece features dynamic markings of *mf*, *f*, and *pp*, along with accents and slurs.

Make sure you take the repeat on your recording

# NafME All-Northwest Wind Symphony Audition

Tuba

## Exercise 1 Chromatic Scale

♩ = 60

Musical notation for Exercise 1: Chromatic Scale. A single staff in bass clef, 4/4 time, with a key signature of two flats. The piece consists of a single melodic line with chromatic ascending and descending scales, ending with a whole rest.

## Exercise 2 Etude Espressivo

♩ = 96

Musical notation for Exercise 2: Etude Espressivo. Three staves in bass clef, 3/4 time, with a key signature of three flats. The piece features dynamic markings (*mp*, *mf*, *f*) and various articulations like accents and slurs.

## Exercise 3 Etude Technical

♩ = 120

Musical notation for Exercise 3: Etude Technical. Three staves in bass clef, 4/4 time, with a key signature of two flats. The piece features dynamic markings (*mf*, *f*, *pp*) and various articulations like accents and slurs.

\*Make sure you take the repeat on your recording





# NafME All-Northwest Wind Symphony Audition

Percussionists must audition on 2 of the 3 instruments (snare drum/mallets/timpani)

Mallets

## Exercise 1

### Chromatic Scale

♩ = 60

Musical notation for Exercise 1: Chromatic Scale. A single staff in 4/4 time with a key signature of two flats (Bb, Eb). The tempo is marked as quarter note = 60. The piece consists of a single line of chromatic scale: C4, C#4, D4, D#4, E4, E#4, F4, F#4, G4, G#4, A4, A#4, B4, B#4, C5, followed by a whole rest.

## Exercise 2

### Etude Espressivo

♩ = 96

Musical notation for Exercise 2: Etude Espressivo. Three staves in 3/4 time with a key signature of three flats (Bb, Eb, Ab). The tempo is marked as quarter note = 96. The piece features dynamic markings of *mp*, *mf*, and *f*, along with accents and slurs.

## Exercise 3

### Etude Technical

♩ = 120

Musical notation for Exercise 3: Etude Technical. Three staves in 4/4 time with a key signature of two flats (Bb, Eb). The tempo is marked as quarter note = 120. The piece features dynamic markings of *mf*, *f*, and *pp*, along with accents and slurs.

Make sure you take the repeat on your recording

# NafME All-Northwest Wind Symphony Audition

Percussionists must audition on 2 of the 3 instruments (snare drum/mallets/timpani)

Timpani

## Exercise 1

### Chromatic Scale

♩ = 60

Musical notation for Exercise 1: Chromatic Scale. A single staff in bass clef, 4/4 time, with a key signature of three flats (B-flat, E-flat, A-flat). The piece consists of a single melodic line with a chromatic scale pattern: C2, C-flat2, B1, B-flat1, A1, A-flat1, G1, G-flat1, F1, F-flat1, E1, E-flat1, D1, D-flat1, C1. The piece ends with a whole rest.

## Exercise 2

### Etude Espressivo

♩ = 96

Musical notation for Exercise 2: Etude Espressivo. Three staves in bass clef, 3/4 time, with a key signature of three flats (B-flat, E-flat, A-flat). The piece features dynamic markings: *mp*, *mf*, and *f*.

## Exercise 3

### Etude Technical

♩ = 120

Musical notation for Exercise 3: Etude Technical. Three staves in bass clef, 4/4 time, with a key signature of three flats (B-flat, E-flat, A-flat). The piece features dynamic markings: *mf*, *f*, *pp*, and *mf*.